

Ensure® Enlive®

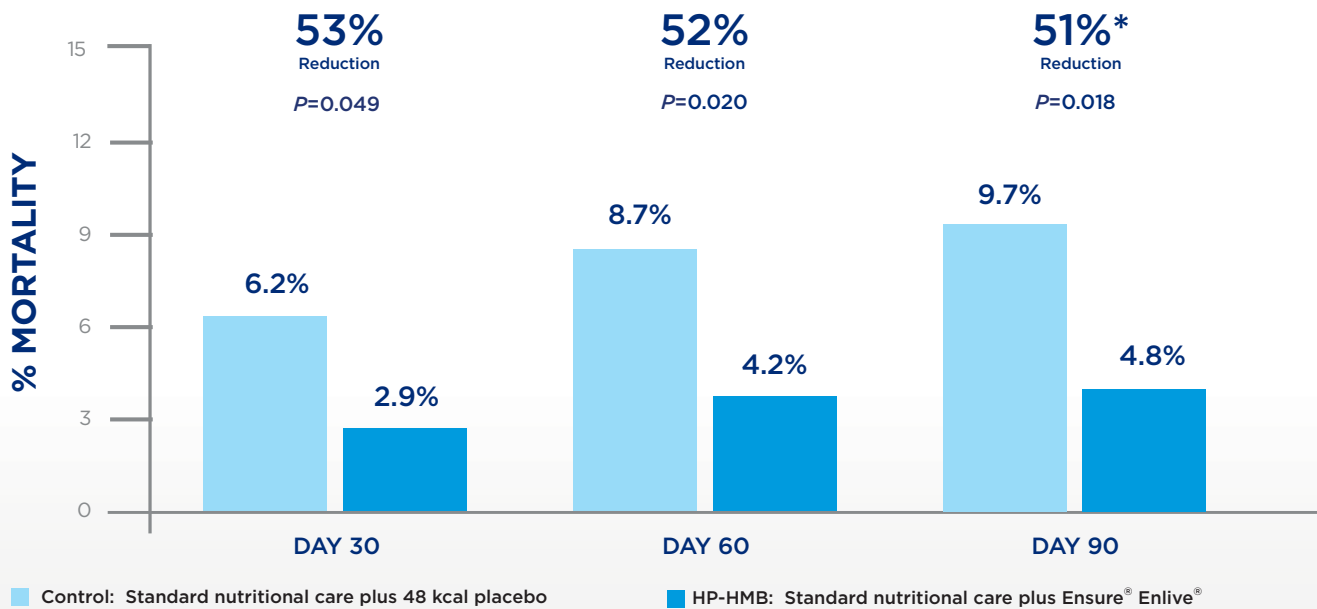
The NOURISH Study: Investigated the impact of Ensure Enlive high-protein oral nutritional supplement with HMB (β -hydroxy- β -methylbutyrate).¹

Patient Population: 652 malnourished hospitalized patients aged ≥ 65 years with congestive heart failure, acute myocardial infarction, pneumonia, or chronic obstructive pulmonary disease were randomized to control (standard of care) or Ensure Enlive

Study Design: Prospective, randomized, double-blind, placebo-controlled, nutritional intervention study conducted at 78 sites

Primary Composite Endpoint: Readmission or mortality through 90 days post-discharge

Ensure Enlive Decreased Mortality Through 90 Days Post-hospital Discharge¹



Ensure Enlive led to a consistent and marked reduction in mortality through 90 days post-discharge, and similar readmission rates between groups.¹

Ensure Enlive improved health outcomes within 90 days¹



Improved nutritional status

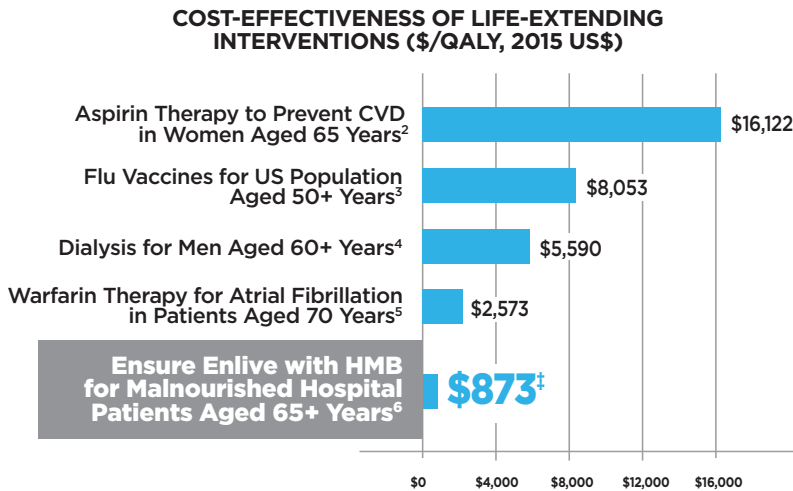


Better weight gain



Improvement in serum vitamin D

At \$5 Per Day, Ensure® Enlive® Is a Cost-effective Intervention for Improving Patient Outcomes^{†,6}



NUMBER NEEDED TO TREAT (NNT)

21
NNT TO PREVENT ONE DEATH WITH ENSURE ENLIVE WITH HMB FOR MALNOURISHED HOSPITAL PATIENTS AGED 65+ YEARS¹

83
NNT TO SAVE 1 LIFE IN PEOPLE WITH KNOWN HEART DISEASE THAT TOOK STATINS FOR 5 YEARS⁷

99
NNT TO PREVENT ONE DEATH WITH FLU VACCINE FOR US POPULATION AGED ≥50 YEARS³

Help Improve Patient Outcomes by Recommending **Ensure Enlive: HMB + 20g Protein**

A Patented Formula: Ensure Enlive is the only complete, balanced nutrition shake that has the unique ingredient HMB, plus high-quality protein, to help rebuild lost muscle.

HMB can help reduce protein degradation in skeletal muscle cells²

Rx

Physician Name: _____ Date: _____
 Patient Name: _____ Patient No: _____
 Address: _____

Product	Dosage	Unit	Dispense	Refill
Ensure Enlive (flavor of choice)	1BID	Bottle	60 Bottles	6

Dispense as written



Ensure
STRENGTH FOR LIFE

References:

1. Deutz NE et al. Readmission and mortality in malnourished, older, hospitalized adults treated with a specialized oral nutritional supplement: A randomized clinical trial, *Clin Nutr*; 2016 [Epub ahead of print]. <http://dx.doi.org/10.1016/j.clnu.2015.12.010>.
2. Eley HL, et al. *Am J Physiol Endocrinol Metab*. 2008;295:E1417-E1426.
3. Maciosek MV, et al. *Am J Prev Med*. 2006;31(1):72-79.
4. Desai AA, et al. *Arch Int Med*. 2008;168(16):1761-1767.
5. O'Brien CL, et al. *JAMA*. 2005;293(6):699-706.
6. Data on file.
7. <http://www.thennt.com/>

[†] Economic modeling using data from the NOURISH trial indicated Ensure Enlive increased projected life expectancy by 8.5 months in malnourished, cardiopulmonary patients aged 65 years or older.

[‡] Men critically ill with kidney injury.